



# InterAcct for Exchange

## Why InterAcct?

### ☑ Integration

All email communication either in or out is collected in the Client files for reference. Also integrates the Calendar with the InterAcct Diary system

### ☑ Simple

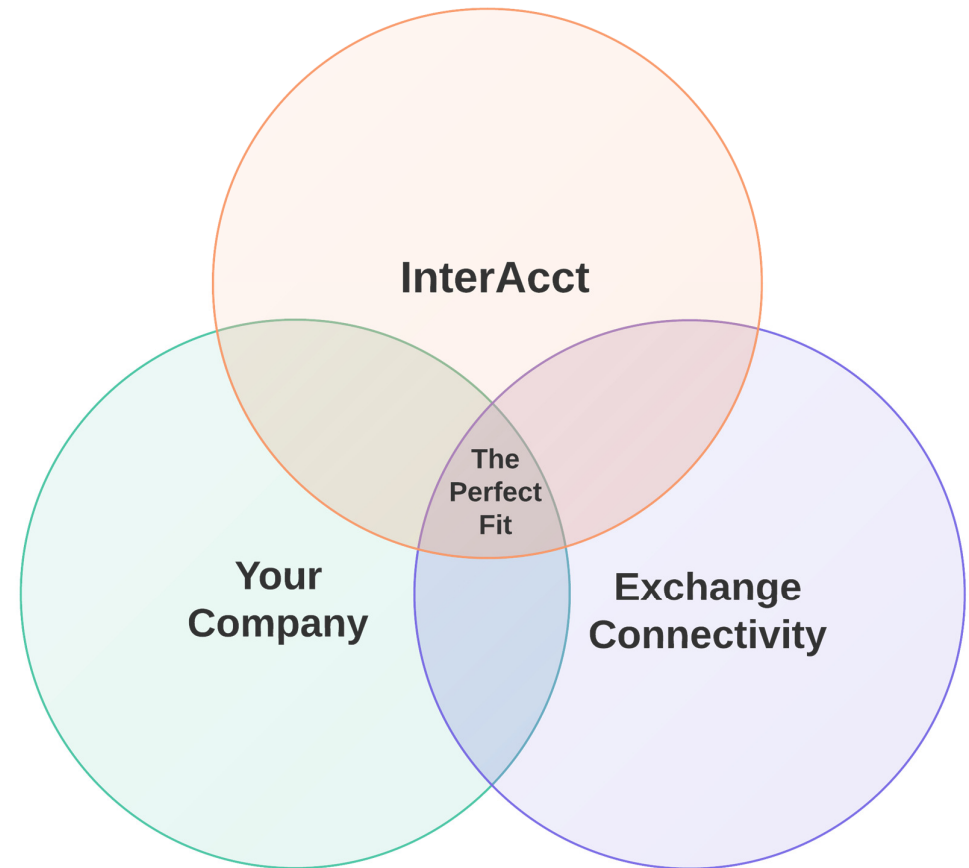
Once setup, the process performs automatically

### ☑ Practical

Designed by a qualified accountant and award winning business minded people (Not traditional programmers)

### ☑ Reliable

The Australian Designed software has been thoroughly tested over many years and represents “leading edge” software design





# Email Logs

The InterAcct Exchange module offers a seamless integration of email and calendar information from your Microsoft Exchange Server with your InterAcct System.

	Date Sent/Rec'd	Time	Sender	Sender Name	Subject	Mailbox
1	24-Aug-15	13:55	SALE9@AIERINFLATABLE.COM.CN	Carson(Aier Inflatables Factory - Sal	RE: top six jumping castles in Aussie	PAUL
2	24-Aug-15	13:52	SERVICE.UPDATE@NIKON.COM.AU	Nikon Service Update	Nikon: I AM Your service booking	PAUL
3	24-Aug-15	13:51	CRAIG@INTERACCT.COM.AU	Craig Johanson	FW: IAJOB#127191 - sms notification	PAUL
4	24-Aug-15	13:51	CRAIG@INTERACCT.COM.AU	Craig Johanson	FW: IAJOB#127191 - sms notification	CRAIG
5	24-Aug-15	13:51	SUPPORT@INTERACCT.COM.AU	InterAcct Support	RE: IAJOB#127501 - Variations - phone call	SVR
6	24-Aug-15	13:47	SUPPORT@INTERACCT.COM.AU	InterAcct Support	RE: IAJOB#127332 - Fixed Asset - Depreciation calculation	SVR
7	24-Aug-15	13:26	INFO2@EMAILSERVER2.GROWBIZONLINE	Elizabeth	Re:about marketing	PAUL
8	24-Aug-15	13:02	NOTIFICATIONS@SIRIUSPEOPLE.COM.AU	Sirius People	Asking Tough Questions: Competency Based Interviewing	PAUL
9	24-Aug-15	12:25	SUPPORT@INTERACCT.COM.AU	InterAcct Support	RE: IAJOB#127640 - EOP Pre-check	SVR
10	24-Aug-15	12:22	SUPPORT@INTERACCT.COM.AU	InterAcct Support	RE: IAJOB#127640 - EOP Pre-check	SVR
11	24-Aug-15	12:18	CRAIG@INTERACCT.COM.AU	Craig Johanson	Please call Dave from Auspackaging.	PAUL
12	24-Aug-15	12:15	ROB@INTERACCT.COM.AU	Rob Baxter	Website views - now wonder the sales are coming in...	SVR
13	24-Aug-15	12:15	ROB@INTERACCT.COM.AU	Rob Baxter	Website views - now wonder the sales are coming in...	PAUL
14	24-Aug-15	12:15	ROB@INTERACCT.COM.AU	Rob Baxter	Website views - now wonder the sales are coming in...	ROB
15	24-Aug-15	12:14	INFO2@EMAILSERVER2.GROWBIZONLINE	Elizabeth	Re:about marketing	SVR
16	24-Aug-15	12:01	SUPPORT@INTERACCT.COM.AU	InterAcct Support	RE: IAJOB#127640 - EOP Pre-check	CRAIG
17	24-Aug-15	12:00	SIMON@INTERACCT.COM.AU	Simon Rainbow	Monthly Goals	SVR
18	24-Aug-15	12:00	SIMON@INTERACCT.COM.AU	Simon Rainbow	Monthly Goals	ROB
19	24-Aug-15	12:00	SIMON@INTERACCT.COM.AU	Simon Rainbow	Monthly Goals	PAUL
20	24-Aug-15	12:00	SIMON@INTERACCT.COM.AU	Simon Rainbow	Monthly Goals	CRAIG
21	24-Aug-15	11:59	ROB@INTERACCT.COM.AU	Rob Baxter	IRS Page online	SVR
22	24-Aug-15	11:59	ROB@INTERACCT.COM.AU	Rob Baxter	IRS Page online	ROB
23	24-Aug-15	11:57	CRAIG@INTERACCT.COM.AU	Craig Johanson	RE: IAJOB#127640 - EOP Pre-check	CRAIG
24	24-Aug-15	11:57	CRAIG@INTERACCT.COM.AU	Craig Johanson	RE: IAJOB#127640 - EOP Pre-check	SVR
25	24-Aug-15	11:45	INFO@NZSKI.COM	The Team at Coronet Peak & The Re	HURRY Final Week Queenstown Spring Ski Deals	PAUL
26	24-Aug-15	11:29	SUPPORT@INTERACCT.COM.AU	InterAcct Support	RE: IAJOB#127639 - Goods received ACC.DDR vs ACC.OID	CRAIG
27	24-Aug-15	11:12	SIMON@INTERACCT.COM.AU	Simon Rainbow	InterAcct Software - initial Cost Estimate	SVR
28	10-Aug-15	15:39	SIMON@INTERACCT.COM.AU	Simon Rainbow	InterAcct Software - initial Cost Estimate	SVR
29	24-Aug-15	10:32	SUPPORT@INTERACCT.COM.AU	InterAcct Support	RE: Advice Required	CRAIG
30	24-Aug-15	10:26	SIMON@INTERACCT.COM.AU	Simon Rainbow	Thank you for your interest in InterAcct Software	SVR
31	24-Aug-15	10:25	CRAIG@INTERACCT.COM.AU	Craig Johanson	Hiya	CRAIG
32	7-Aug-15	11:36	SIMON@INTERACCT.COM.AU	Simon Rainbow	Thank you for your interest in InterAcct Software	SVR

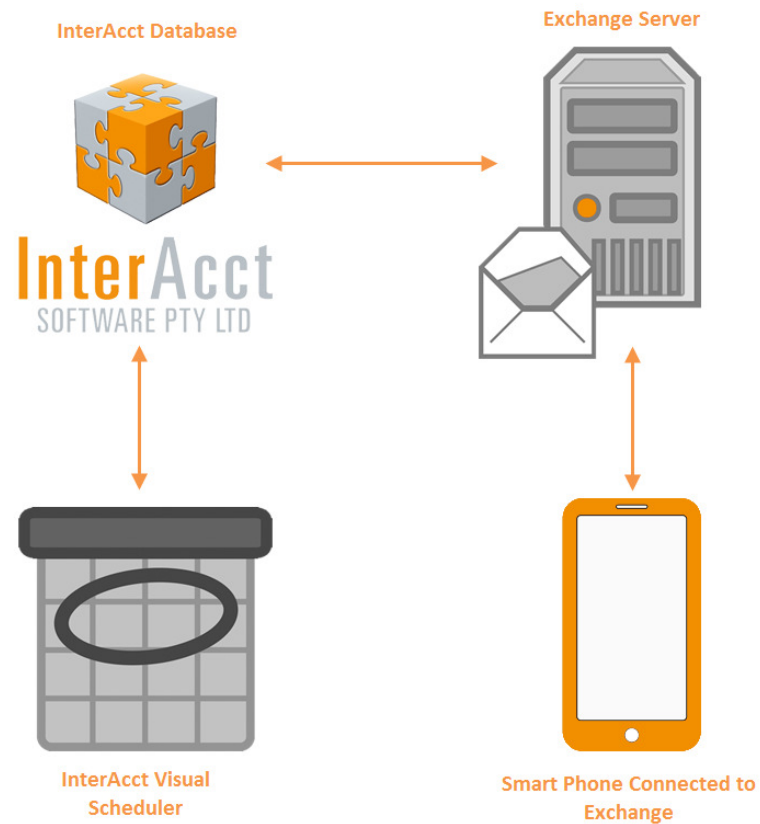


## Diary Linking

With the InterAcct Exchange module, your appointments that are in your InterAcct Diary are automatically linked through to your Outlook calendar.

These appointments can be changed or moved in outlook or from your smart phone and these changes will go back to your InterAcct diary (and client contact history).

The diary can also link to another application called the InterAcct Visual Scheduler. This additional connection had the option to create timesheets as well as new appointments with direct references to jobs and other details from the database.





## Key Features & Advantages

	Feature :	Advantage :	Base?
<b>Integrated</b>	Your appointments can be managed from multiple sources.	Your appointments can be managed from Outlook or your Phone making it easier to get updates from InterAcct in the field	Option
<b>Emails linked</b>	All Communication via email with clients can be viewed easily in a central place.	Makes Client or Job management easier. Especially if multiple staff are involved.	Option
<b>Domain Control</b>	System can identify Client Domains to automatically group emails by source	New contacts from existing clients can be automatically allocated to that client file based on their domain name (I.E InterAcct.com.au)	
<b>Attachments</b>	Email attachments can be viewed and opened from within InterAcct.	No need to save and store these file in another location.	Option

## Screen 1: Email Setup

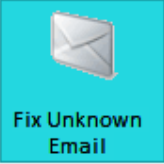
View, search and setup User mail settings

Operator	SVR
Mailbox	SVR
Name	Simon Rainbow
Email Address	simon@interacct.com.au

Menu
1. My Emails
2. Company Emails
3. Company Emails - Assign to Jobs
4. Company Emails - Job Related
5. EMail Recipients
Email Address Assigning
6. Unknown Recent Email Addresses
7. Client Email Addresses Sent/Received
8. All Email Addresses Sent/Received
Copy your Contact Names to MS-Outlook :
9. Step 1 : Select Contact Names to Copy
10. Step 2 : View Contacts selected to Copy

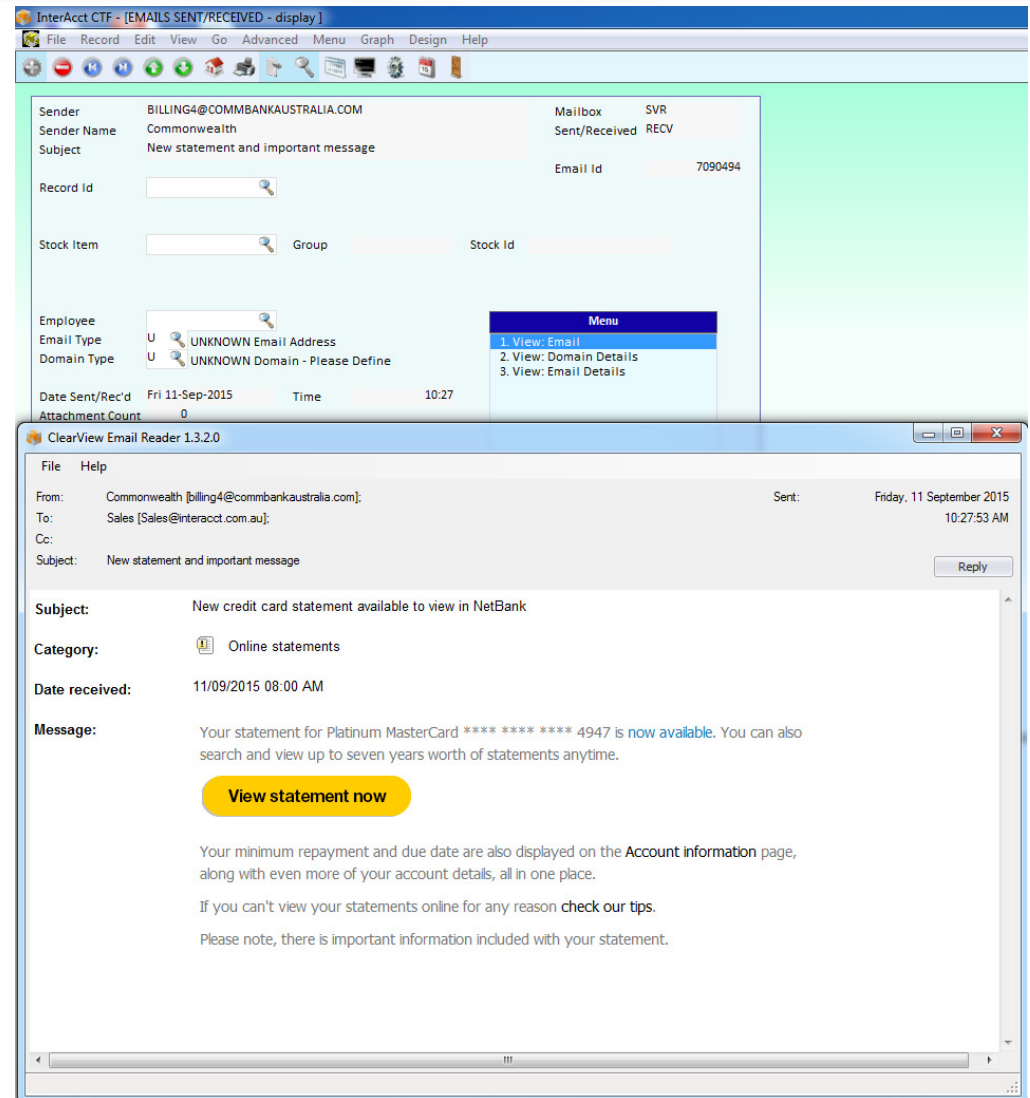


Fix Unknown Email

EXCHANGE MAILBOXES TO SYNC list					
File Record Edit View Go Advanced Graph New Design Help					
	Mailbox	Name	Email Address	Sync Emails	Sync Appointments
1	CRAIG	Craig Johanson	craig@interacct.com.au	Y	Y
2	PAUL	Paul Rainbow	paul@interacct.com.au	Y	Y
3	ROB	Robert Baxter	rob@interacct.com.au	Y	Y
4	SVR	Simon Rainbow	simon@interacct.com.au	Y	Y

## Screen 2: Email View

- ✓ Open Attachments
- ✓ View emails in HTML, Plain text or Rich text formats.
- ✓ Reply
- ✓ Forward
- ✓ Sort and categorise.

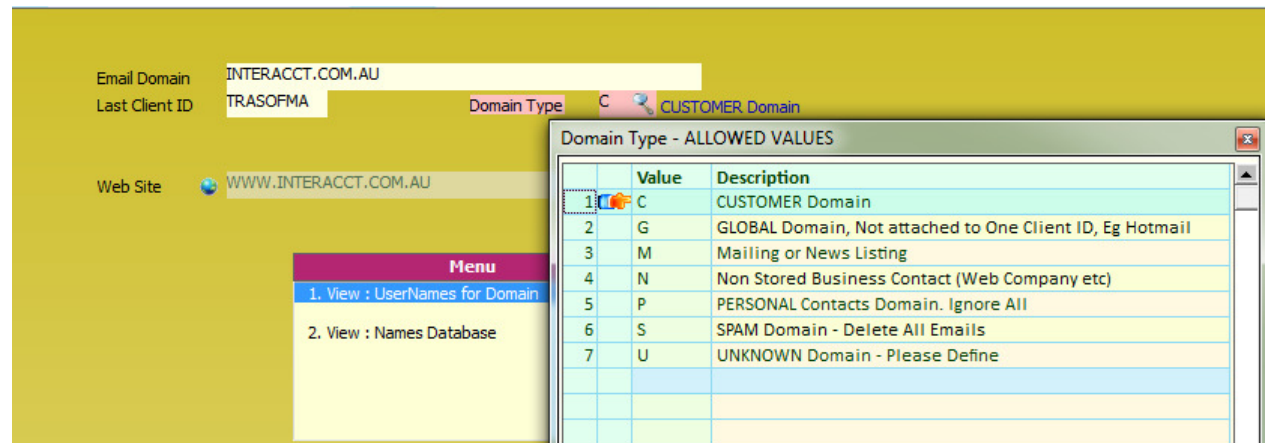


## Screen 3: Domain Setup

Domains can be setup so that new emails from the same domain can be automatically assigned to a specific client file.

Domains that are more general like Gmail or Hotmail, can be setup to being ignored from this process to maintain records more easily

Unknown email locations are grouped together to allow you to easily search and allocate them against clients.



Email Domain: INTERACCT.COM.AU  
Last Client ID: TRASOFMA  
Domain Type: C CUSTOMER Domain  
Web Site: WWW.INTERACCT.COM.AU

**Menu**

- 1. View : UserNames for Domain
- 2. View : Names Database

**Domain Type - ALLOWED VALUES**

	Value	Description
1	C	CUSTOMER Domain
2	G	GLOBAL Domain, Not attached to One Client ID, Eg Hotmail
3	M	Mailing or News Listing
4	N	Non Stored Business Contact (Web Company etc)
5	P	PERSONAL Contacts Domain. Ignore All
6	S	SPAM Domain - Delete All Emails
7	U	UNKNOWN Domain - Please Define



## InterAcct Pricing (Per User)

Users	Base InterAcct	Exchange (A)	Sales Order Entry (B)	Lengths and Sheets (C)
<b>1</b>	\$1,500 (15-25)	+ \$500 (10)	+ \$350 (5)	+ \$250 (2-3)
<b>2-3</b>	\$1,000 (20-30)	+ \$500 (10)	+ \$350 (5)	+ \$250 (2-3)
<b>4</b>	\$750 (20-30)	+ \$375 (10)	+ \$250 (5-8)	+ \$188 (2-3)
<b>5-9</b>	\$600 (25-35)	+ \$300 (10-15)	+ \$200 (5-8)	+ \$150 (3-5)
<b>10-19</b>	\$500 (30-40)	+ \$275 (10-15)	+ \$175 (5-8)	+ \$125 (3-5)
<b>20-49</b>	\$400 (40-60)	+ \$250 (10-15)	+ \$150 (10-15)	+ \$100 (3-5)
<b>50+</b>	\$350 (50-75)	+ \$230 (15-25)	+ \$130 (10-20)	+ \$90 (5-10)

### Software Pricing

Software Pricing is per Computer Network "User" as defined in the above table. The optional software modules (e.g., Job Cost Estimating) require the Base InterAcct as well, and are purchased based on the number of base Network Users. Prices are all ex GST.

#### + Annual Support Pricing

Yearly support is calculated at 20% of purchase price, with no CPI annual increases. Support is reduced by 30% after 3 years. For example a single User (with just the base InterAcct) would be (\$1,500 x 20%) = \$300

#### + Implementation & Training Budget

The (Number) denotes the estimated min/max hours of Implementation & Training required in the budget per installation / module (not per User). Implementation / training "Advanced" is currently charged at the average rate of \$160 per hour.

### Modules

There is a wide variety of software modules available for purchase, talk to InterAcct staff about your specific software needs.

### Request a Cost Estimate:

InterAcct Software Pty Ltd

Toll Free: 1300 66 26 26  
Email: [sales@interacct.com.au](mailto:sales@interacct.com.au)

After Hours: 0413 555 315  
Web: <http://www.interacct.com.au>