

Quick Stock Control



Most InterAcct customers seek a fully integrated accounting and stock control system.

However, sometimes there is a need for a Stock Control only system, with minimal accounting. This new option comes standard with the base InterAcct package, so software costs are kept at a minimum.

The concept is simply to effectively have only one screen, being one transaction file, that handles all movements in/out of stock –

- Opening Stock Balance
- Delivery Docket Receipts
- Supplier Invoices
- Customer Sales
- Stock Takes
- Stock Adjustments
- Customer Credit Returns
- Stock Returns to Suppliers
- Job Stock Issues

You can decide whether you only want to just focus on stock quantities, or to have \$ values as well. From that simple transaction, the stock database and all other (non accounting) files are updated.

InterAcct Master - [QUICK STOCK MANAGEMENT - display]

File Record Edit View Go Advanced Menu Graph Design Help

Clients Creditors Quotes/Invoices Accounting Stock

Menu

Transactions :

1. Quick Stock Transactions
2. Purchase Orders
3. Stocktakes
4. Manual Stocktakes
5. Opening Sales Analysis
6. Stock Adjustments
7. Goods Rec'd Dockets
8. Supplier Invoices

Getting Started :

9. Suppliers, Creditors
10. Groups, Product Items
11. Warehouse Details
12. Setup Image Directory
13. Product Label Format
14. Buy/Sell Units
15. ABC Stock Status
16. PO Types

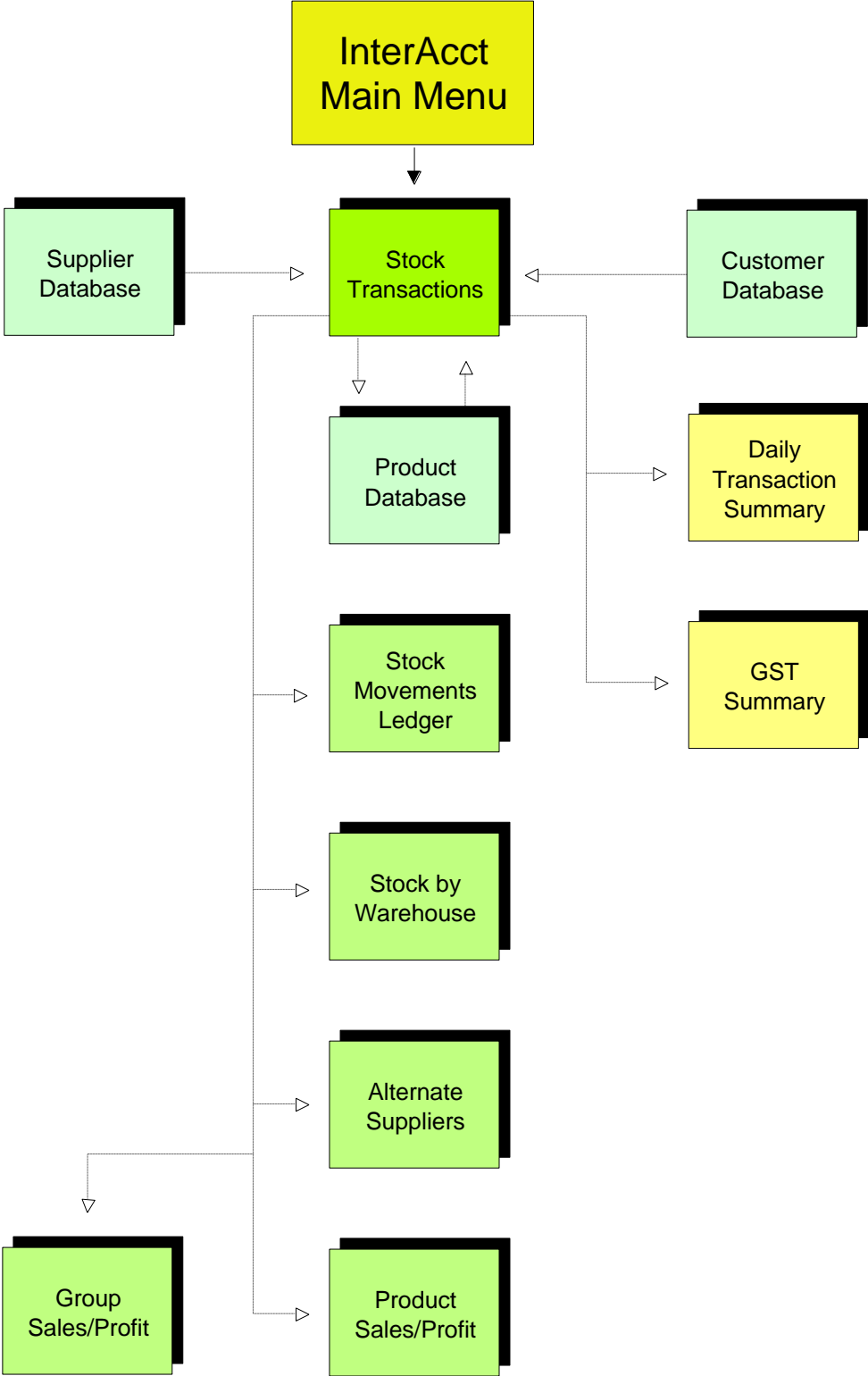
Search & Analysis :

17. Product Items, Descriptions
18. Also Known As
19. Group, Category, Product
20. Product Items Database
21. Suggested Re-Orders
22. Backorders
23. B/Orders by Item
24. B/Orders by Supplier
25. Group Sales Analysis
26. Item Sales Analysis
27. Change Selling Prices
28. Stock Balance Negative
29. Stock Ledger Transactions
30. Product Reports
31. Exit InterAcct

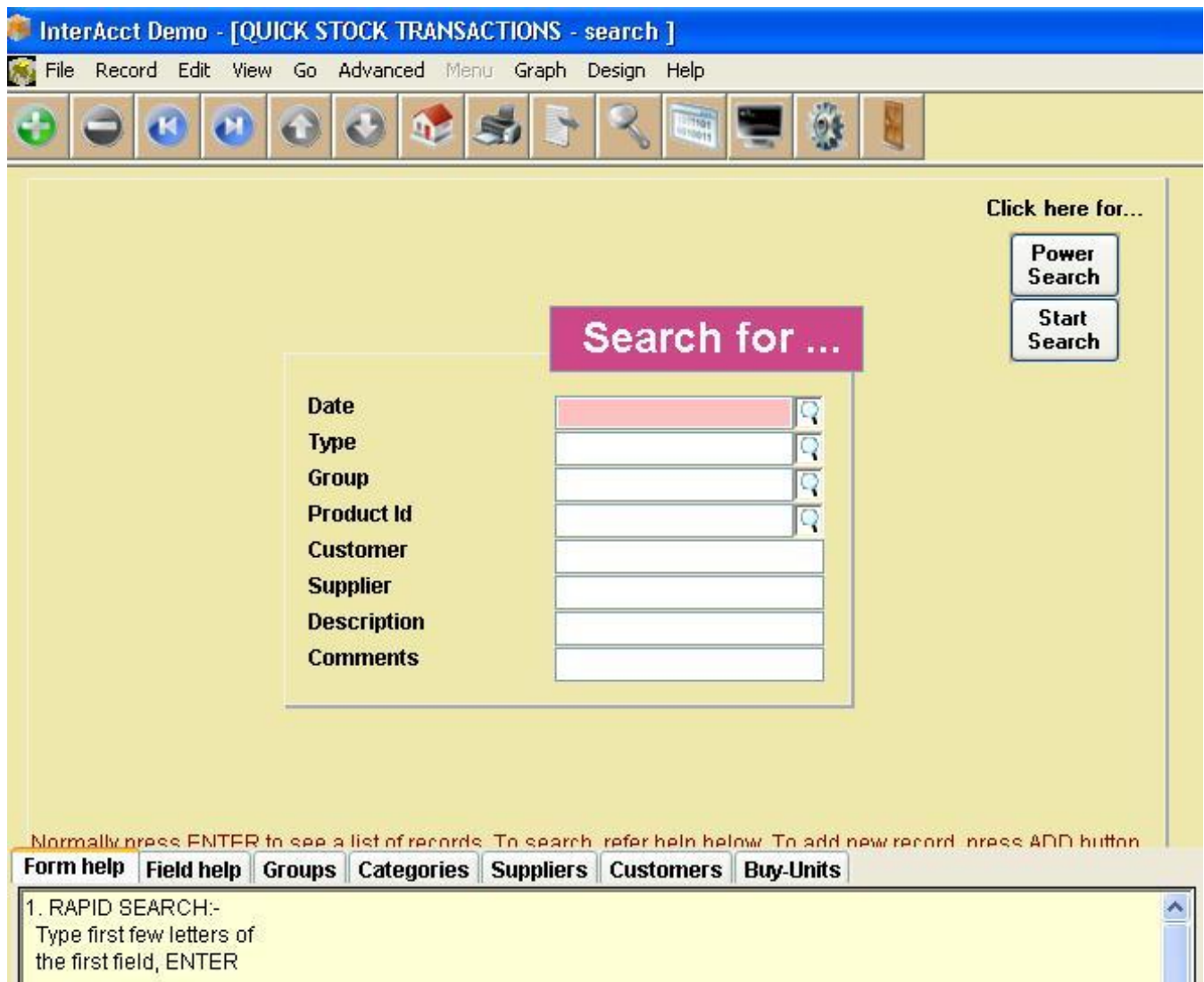
Form help Field help Contact-Us Creditors Debtors Management Finance Reports

Welcome to InterAcct Software - "Quick" Stock Management Menu.

Flow Chart



Transaction Search :



Once you select the “Quick Stock Transactions” Menu Item, the system offers you the opportunity to search on your existing transaction records.

You can by-pass the search function – by pressing the “Add” (a new record) button, or simply press the Enter key to see a list of records. They will list out so that the last transaction always appears at the top of the list. Please see the next page.

Interfact Demo - [QUICK STOCK TRANSACTIONS list]

File Record Edit View Go Advanced Graph Design Help

Date	Type	Group	Product Id	Reference	Unit Cost \$	Buy Qty #	Adjust #	Sold Qty #	Return #	Stock \$	Sales \$	Profit \$	Net GST \$	Customer	Supplier	Description	Comments
1 31-May	OPB	ELECTRIC	DESK-LAMP	LA433	1,150.5000	0.000	0.000	0.000	0.000	575.50	0.00	0.00	0.00		Lighting Australia	Desk Lamp, 240v, Wooden Base	One is Slightly Damaged
2 31-May	GRH	ELECTRIC	DESK-LAMP	LA4243	1,175.5000	2.000	0.000	0.000	0.000	2,351.00	0.00	0.00	-235.20		Lighting Australia	Desk Lamp, 240v, Wooden Base	
3 31-May	CRI	ELECTRIC	DESK-LAMP	LA4243	1,180.0000	1.000	0.000	0.000	0.000	1,180.00	0.00	0.00	-118.00		Lighting Australia	Desk Lamp, 240v, Wooden Base	
4 31-May	QIH	ELECTRIC	DESK-LAMP	243244	0.0000	0.000	0.000	2.000	0.000	-241.32	330.00	88.68	33.00	Corporate Entel		Desk Lamp, 240v, Wooden Base	
5 31-May	ADJ	ELECTRIC	DESK-LAMP		0.0000	0.000	1.000	0.000	0.000	-26.62	0.00	0.00	-2.66			Desk Lamp, 240v, Wooden Base	
6 31-May	STK	ELECTRIC	DESK-LAMP	55454	32.6500	0.000	0.000	0.000	0.000	-26.62	0.00	0.00	-2.66			Category 5 Network Cabling	
7 31-May	RET	ELECTRIC	DESK-LAMP	45556	0.0000	0.000	0.000	0.000	1.000	-32.70	0.00	0.00	3.27		Lighting Australia	Category 5 Network Cabling	Faulty on Arrival
8 31-May	CHD	ELECTRIC	DESK-LAMP	45556	0.0000	0.000	0.000	0.000	0.000	-118.00	-185.00	-47.00	-16.50	Corporate Entel		Category 5 Network Cabling	Goods Received were Faulty
										3,661.24	185.00	41.68	-338.75				

Opening Stock Balance

The screenshot displays the 'InterAcct Demo - [QUICK STOCK TRANSACTIONS - display]' window. The interface includes a menu bar (File, Record, Edit, View, Go, Advanced, Menu, Graph, Design, Help) and a toolbar with various icons. The main form is titled 'Opening Stocktake' and contains the following fields:

- Type:** OPB (Opening Stocktake)
- Date:** Tue 31-May-2011
- Group:** ELECTRIC
- Product Id:** DESK-LAMP
- Description:** Desk Lamp, 240v, Wooden Base
- Part No:** DL-240V/WB
- Our Ref:** 600012
- Category:** LAMP
- ABC Status:** C
- Bin Loc:** (empty)
- Buy Units:** BOX10
- Sell Units:** EACH
- Opening #:** 5.000
- Unit Cost \$:** 1,150.5000
- Stock \$:** 575.50
- Net GST \$:** 0.00
- Comments:** One is Slightly Damaged

On the right side, there is a 'Show Image' button and a small image of a desk lamp. Below the main form, there is a 'Menu' box with the following options:

1. View : Stock Item
2. Specifications

At the bottom of the window, there are several tabs: Form help, Field help, Groups, Categories, Suppliers, Customers, and Buy-Units. Below these tabs, a text box contains the following information:

This transaction file is used to record any "movement" in Stock.
These transactions update the Stock (& GST) Database, but not General Ledger, Creditors, or Debtors.

This would typically be your first type of entry – where you can not only create your initial Stock Database information, but also input the Opening Stock Balance.

Alternatively, you can create your Stock Masterfile database separately (in the normal way), and use InterAcct's standard Stock Opening Stocktake routine.

There are (Tab) Menu Links available to link into Supplier , Customer Databases.

InterAcct Demo - [QUICK STOCK TRANSACTIONS - display]

File Record Edit View Go Advanced Menu Graph Design Help

Type: **GRH** Delivery Docket Receipts Date: Tue 31-May-2011 Show Image
 Search Product Id: _____
 Group: ELECTRIC Product Id: DESK-LAMP Our Ref: 600013
 Description: Desk Lamp, 240v, Wooden Base Reference: LA433
 Supplier Id: LITTRICA W/House: HO
 Buy Units: BOX10 Sell Units: EACH Bin Loc: BIN-1
 Buy Qty #: 2.000 Unit Cost \$: 1,175.5000
 Stock \$: 2,351.00
 Available #: _____ Net GST \$: -235.20
 Supplier: Lighting Australia
 Comments: _____

Type - ALLOWED VALUES

	Value	Description
1	ADJ	Stock Adjustments
2	CRD	Returned by Customer
3	CRI	Supplier's Invoice
4	GRH	Delivery Docket Receipts
5	JOB	Stock Issue to Job
6	OPB	Opening Stocktake
7	QIH	Sales Invoice
8	RET	Returned to Supplier
9	STK	Subsequent Stocktake

Form help Field help Groups Categories Suppliers Customers
 Select the transaction type.
 This will determine the data input fields.

Stock Transactions :

As mentioned on the first page, there are several Stock Transaction types that can be all entered on this one "Quick" Stock Transaction screen.

As you would expect, different fields will appear – depending on the transaction type you select.

Once a transaction is entered, all related stock information is updated. However, you may subsequently decide to amend the transaction, or even delete it.

Stock Database :

The screenshot displays the InterAct Demo software interface for a stock masterfile record. The top window is titled 'InterAct Demo - [PRODUCT ITEMS - display]'. The main area shows the masterfile for 'DESK-LAMP' (Item Code #) with various fields for description, type, units, and costs. A menu is open over the masterfile, listing 15 options, with 'View : Transactions' selected. Below the masterfile, a window titled 'STOCK ITEM TRANSACTIONS list , Desk Lamp, 240v, Wooden Base' shows a table of transactions. An arrow points from the 'View : Transactions' menu option to the transaction list.

Masterfile Record:

Group	ELECTRIC	Status	C	Serial/Batch?	N	Supp Id	LITTRICA
Item Code #	DESK-LAMP	Supp #	DL-240V/WB	Bar Code		Category	LAMP
Description	Desk Lamp, 240v, Wooden Base						
Type ?	B	Lighting Australia	Buy Unit	BDX10	Sell #	EACH	
Kg #	0.00						
Buy Cost \$	1,175.5000	Open Bal #	5,000				
Net Cost \$	117.5500	In Qty #	29,000				
GST Tax \$	11.7550	Out Qty #	1,000				
Average \$	118.1045	Adj Qty #	2,000				
In Stock \$	3,661.24	In Stock #	31,000				
Markup %	50.00	Reserve #	0,000				
Sugg Sell \$	176.33	AvailQty#	31,000				
List Price\$	0.00	S/Orders #	0,000				
Margin %	0.00	B/Orders #	0,000				
Diff %	150.00	F/Orders #	0,000				
Labour #	0.00	P/Orders #	0,000				
Last Rec'd		Net Qty #	31,000				

Menu:

1. Add Next Stock Item
2. Suggested Re-Order
3. View : Product Movements
4. View : Transactions
5. Warehouse Locations
6. Where Item Used
7. Alternates, Supercessions
8. Disclaimers
9. Selling Price Levels
10. Customer Pricing
11. Auto Create Purchase
12. Product Description
13. Alternate Suppliers
14. View : Monthly Sales
15. Print : Profile

STOCK ITEM TRANSACTIONS list , Desk Lamp, 240v, Wooden Base

	Date	Ref No	Type	In Qty #	Out Qty #	Adj Qty #	In Stock #	Avail Qty#	S/Orders #	B/Orders #	P/Orders #	Net Qty #
1	31-May-1	600012	QST	0.000	0.000	0.000	5,000	5,000	0.000	0.000	0.000	5,000
2	31-May-1	600013	QST	20,000	0.000	0.000	20,000	20,000	0.000	0.000	0.000	20,000
3	31-May-1	600014	QST	10,000	0.000	0.000	10,000	10,000	0.000	0.000	0.000	10,000
4	31-May-1	600015	QST	0.000	2,000	0.000	-2,000	-2,000	0.000	0.000	0.000	-2,000
5	31-May-1	600016	QST	0.000	0.000	1,000	-1,000	-1,000	0.000	0.000	0.000	-1,000
6	31-May-1	600017	QST	0.000	0.000	1,000	-1,000	-1,000	0.000	0.000	0.000	-1,000
7	31-May-1	600018	QST	-1,000	0.000	0.000	-1,000	-1,000	0.000	0.000	0.000	-1,000
8	31-May-1	600019	QST	0.000	-1,000	0.000	1,000	1,000	0.000	0.000	0.000	1,000
				29,000	1,000	2,000	31,000	31,000	0.000	0.000	0.000	31,000

This shows the standard InterAct Stock Masterfile record, together list a list of stock movement transactions. There is a menu link back to the source transaction from here.

The Menu options shown may simplified for you – if you don't need them, or have not purchased the relevant Software Module.